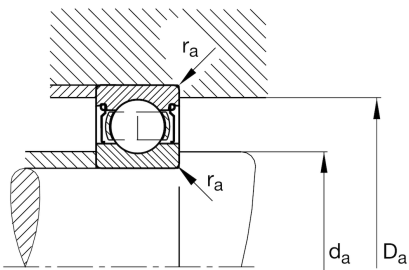
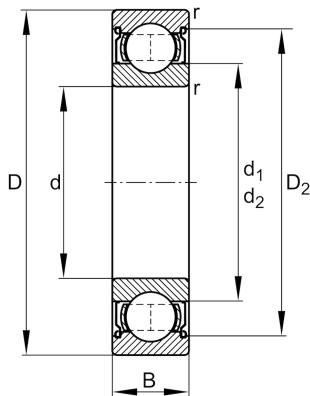
**FAG****6206-2Z**

Deep groove ball bearing

Schaeffler ID:  
0167200670000Deep groove ball bearing 62...-2Z, single  
row, shields, steel sheet metal cage

## Technical information

**Dimensions**

$r_{\min}$	1 mm	Minimum chamfer dimension
$D_2$	54.9 mm	Caliber diameter outer ring
$d_1$	40 mm	Shoulder diameter inner ring
	0.196 kg	Weight

**Main Dimensions & Performance Data**

d	30 mm	Bore diameter
D	62 mm	Outside diameter
B	16 mm	Width
$C_r$	20,700 N	Basic dynamic load rating, radial
$C_{0r}$	11,300 N	Basic static load rating, radial
$C_{ur}$	700 N	Fatigue load limit, radial
$n_G$	13,800 1/min	Limiting speed
$n_{gr}$	12,000 1/min	Reference speed

**Mounting dimensions**

$d_{a \min}$	35.6 mm	Minimum diameter shaft shoulder
$D_{a \max}$	56.4 mm	Maximum diameter of housing shoulder
$r_{a \max}$	1 mm	Maximum fillet radius

**Calculation factors**

$f_0$	13.8	Calculation factor
-------	------	--------------------

**Temperature range**

$T_{\min}$	-20 °C	Operating temperature min.
$T_{\max}$	120 °C	Operating temperature max.